

The Details.

THE SHELDON BALLROOM

Includes up to 25 tables, with 8 to 10 chairs per 66" round table.

Monday through Thursday \$1,400*

Friday through Sunday \$2,000*

0-200 guests with food stations and dance floor

0-250 guests with seated dinner and dance floor

0-300 guests for standing cocktail reception

LOUIS SPIERING ROOM

Includes up to 50 tables, with 8 to 10 chairs per 66" round table.

Monday through Sunday

0-250 guests \$1,800*

250-350 guests \$2,000*

350-500 guests \$3,000*

RENTAL FEE FOR BOTH OF THE ABOVE INCLUDES:

- Use of The Sheldon space for four (4) hours
- Facility Manager for four (4) hours
- Security in main lobbies for four (4) hours

ADDITIONAL SERVICES

- Advanced Technical Services
4-hour minimum, per call \$60/hour**
- Coatroom Attendant(s)
Per attendant, per evening, tipping allowed. \$50
Per attendant, per evening, no tipping \$75
- After-Hours Rehearsal/Set-Up \$150/hour
4-hour minimum, per call

Discounts available for Non-Profit Organizations.
Must provide a letter of tax exemption to The Sheldon.
Please contact rental department for more information.

**Additional \$750 fee will apply if no beverage service optioned*

*** Overtime fees apply after 8 hours/tech*

The Details.

SHELDON CONCERT HALL

RENTAL FEE

Monday through Thursday \$1,800

Friday through Sunday \$2,500

RENTAL INCLUDES

- Use of the Sheldon Concert Hall for four (4) hours
- Green Room for artist hospitality
- Security in main lobbies for four (4) hours
- Facility Manager for four (4) hours
- House Manager & Ushers, by advance request, based upon availability

ADDITIONAL SERVICES

- Advanced Technical Services
Minimum 4-hour charge, per call \$60/hour*
- Box Office Personnel \$100 per person/evening
- Merchandise Salesperson \$25 per person/evening
All merchandise sales subject to 15% commission.
- Coatroom Attendant(s)
Per attendant, per evening, tipping allowed. \$50
Per attendant, per evening, no tipping \$75
- After-Hours Rehearsal/Set-Up
Minimum 4-hour charge, per call \$150/hour
- Greenroom Security. fee dependent on artist schedule

Discounts available for Non-Profit Organizations.
Must provide a letter of tax exemption to The Sheldon.
 Please contact rental department for more information.

KEMPER ATRIUM AND SHELDON ART GALLERIES

RENTAL FEE

Any day \$350/hour, 2-hour minimum

RENTAL INCLUDES:

- Security in Emerson Center building
- Facility Manager, Gallery Ushers & Guest Coat Room

No discount available for Non-Profit Organizations.

** Overtime fees apply after 8 hours/tech*

The Sheldon Wedding.

*Make your wedding day
memorable and convenient
for you and your guests by
hosting both the wedding
ceremony and reception in
the gracious elegance of
The Sheldon.*

The Sheldon Wedding gives discounted rates for access to all areas of The Sheldon on your special day: The Green Room and Dressing Rooms are available for the wedding party, the Concert Hall for your wedding ceremony, the Atrium Lobby for a cocktail reception, and finally The Sheldon Ballroom or Louis Spiering Room for dinner and dancing.

RENTAL FEE WITH SHELDON BALLROOM RECEPTION

\$ 3,300*

0-200 guests with food stations and dance floor

0-250 guests with seated dinner and dance floor

0-300 guests for standing cocktail reception

RENTAL FEE WITH LOUIS SPIERING ROOM RECEPTION

0-250 guests \$3,300*

250-350 guests \$3,500*

350-500 guests \$4,500*

RENTAL INCLUDES:

- Green Room and Dressing Rooms prior to ceremony
- Rehearsal during normal business hours, upon availability
- Concert Hall for wedding ceremony
- Atrium Lobby for one (1) hour
- Ballroom or Louis Spiering Room for four (4) hours
- Security in main lobbies

ADDITIONAL SERVICES OFFERED:

- Advanced Technical Services
Minimum 4-hour charge, per call \$60/hour**
- Coatroom Attendant(s)
Per attendant, per evening, tipping allowed. \$50
Per attendant, per evening, no tipping \$75
- After-Hours Rehearsal/Set-Up
Minimum 4-hour charge, per call \$150/hour

**Additional \$750 fee will apply if no beverage service optioned*

*** Overtime fees apply after 8 hours/tech*

Sheldon Preferred Caterers.

CATERING SERVICE AT THE SHELDON

For convenience and flexibility, The Sheldon allows any licensed Missouri catering firm to provide food and service for events. All caterers must show proof of liability insurance, workman's compensation for servers, and state business license. The Sheldon has a preferred list of caterers. If you choose a caterer not on the preferred list we will ask their representative to meet with us and provide copies of the above documentation.

A \$5.00 per person catering fee is added to all contracts which do not utilize a caterer from The Sheldon preferred catering list.

Call any of the seven preferred caterers listed, and they will be happy to help plan your event.

HENDRI'S CATERING
4501 Ridgewood Avenue
St. Louis, MO 63116
314.752.4084
www.hendris.com

RUSSO'S GOURMET CATERING
9904 Page Avenue
St. Louis, MO 63132
314.427.6771
www.russosgourmet.com

THE SOCIAL AFFAIR LLC
2232 Thurman Avenue
St Louis, MO 63110
314.735.5527
www.thesocialaffairstl.com

ORLANDO'S
4300 Hoffmeister
St. Louis, MO 63125
314.638.6660
www.orlandogardens.com

CONCETTA'S CATERING
600 S. 5th Street
St. Charles, MO 63301
636.946.2468
www.concettas-stcharles.com

LA CHEF
7169 Manchester Road
St. Louis, MO 63143
314.647.5350
www.lachef.com

BUTLER'S PANTRY
1414 Park Avenue
St Louis, MO 63104
314.664.7680
www.butlerspantry.com

The Sheldon believes in a great customer experience. To ensure this happens for your events, Premier Rentals, The Sheldon's exclusive rental vendor, can help you with all of your and your caterer's needs. Please contact The Sheldon's Director of Events for more information on arranging your own rentals through Premier.

Sheldon Beverage Service.

The Sheldon offers you and your guests the finest in specialty, imported, and premium beverages for every event.

Whether you choose a Premium Bar, House, Domestic Bar Package or our Cash Bar Service, your guests will experience exemplary service and refreshing drinks. *An 18% Service is added to all Beverage Service Fees. If no tip jar, automatic \$100 tip per bartender will be added to contract.*

- Non-Alcoholic Open Bar: Minors only, unless otherwise agreed on by client and The Sheldon
- The Sheldon uses plastic barware for beverage service. Clients may request glass barware at additional cost.

CASH BAR

Deposit of \$150 per bar/One bartender per every 100 people.

TALLY BAR

- House Bar options: \$7.00/drink
- Premium Bar options: \$9.00/drink

Billed to client, plus bartender fees, plus 18% and tip (\$100/bartender)

EXTRA BARTENDERS

\$150/bartender

No liquor can be donated for your event and liquor cannot be brought in from an outside source, due to The Sheldon having the liquor license. NO EXCEPTIONS.

PREMIUM OPEN FULL BAR

\$24 pp / 4-hours plus 18% Beverage Service Fee and tip (\$100/bartender)
\$30 pp / 5-hours plus 18% Beverage Service Fee and tip (\$100/bartender)*

All liquors (premium): 4 Roses Small Batch, Jack Daniels Black, Maker's Mark, Crown Royal, Bacardi Light Superior, Captain Morgan Spiced, Glenlivet 12-year, Bombay Sapphire, Grey Goose, Disaronno Amaretto, Triple Sec

Microbrew and Domestic Beers

Premium Wine Assortment

Dasani water, cranberry juice, orange juice

HOUSE OPEN BAR

\$20 pp / 4- hours plus 18% Beverage Service Fee and tip (\$100/bartender)
\$25 pp / 5-hours plus 18% Beverage Service Fee and tip (\$100/bartender)*

Jack Daniels Black Label, Bacardi Light Superior, Dewar's White Label, Beefeater, Absolut, Disaronno Amaretto

Microbrew and Domestic Beers

Premium Wine Assortment

Assortment of sodas, cranberry, and orange juice

BEER, WINE, SODA

\$16 pp / 4-hours plus 18% Beverage Service Fee and tip (\$100/bartender)
\$20 pp / 5-hours plus 18% Beverage Service Fee and tip (\$100/bartender)*

Microbrew and Domestic Beers

Premium Wine Assortment

Assortment of sodas, cranberry, and orange juice

NON-ALCOHOLIC OPEN BAR (MINORS ONLY)

\$8 pp / 4-hours plus 18% Beverage Service Fee and tip (\$100/bartender)
\$10 pp / 5-hours plus 18% Beverage Service Fee and tip (\$100/bartender)*

Assortment of sodas, cranberry, and orange juice

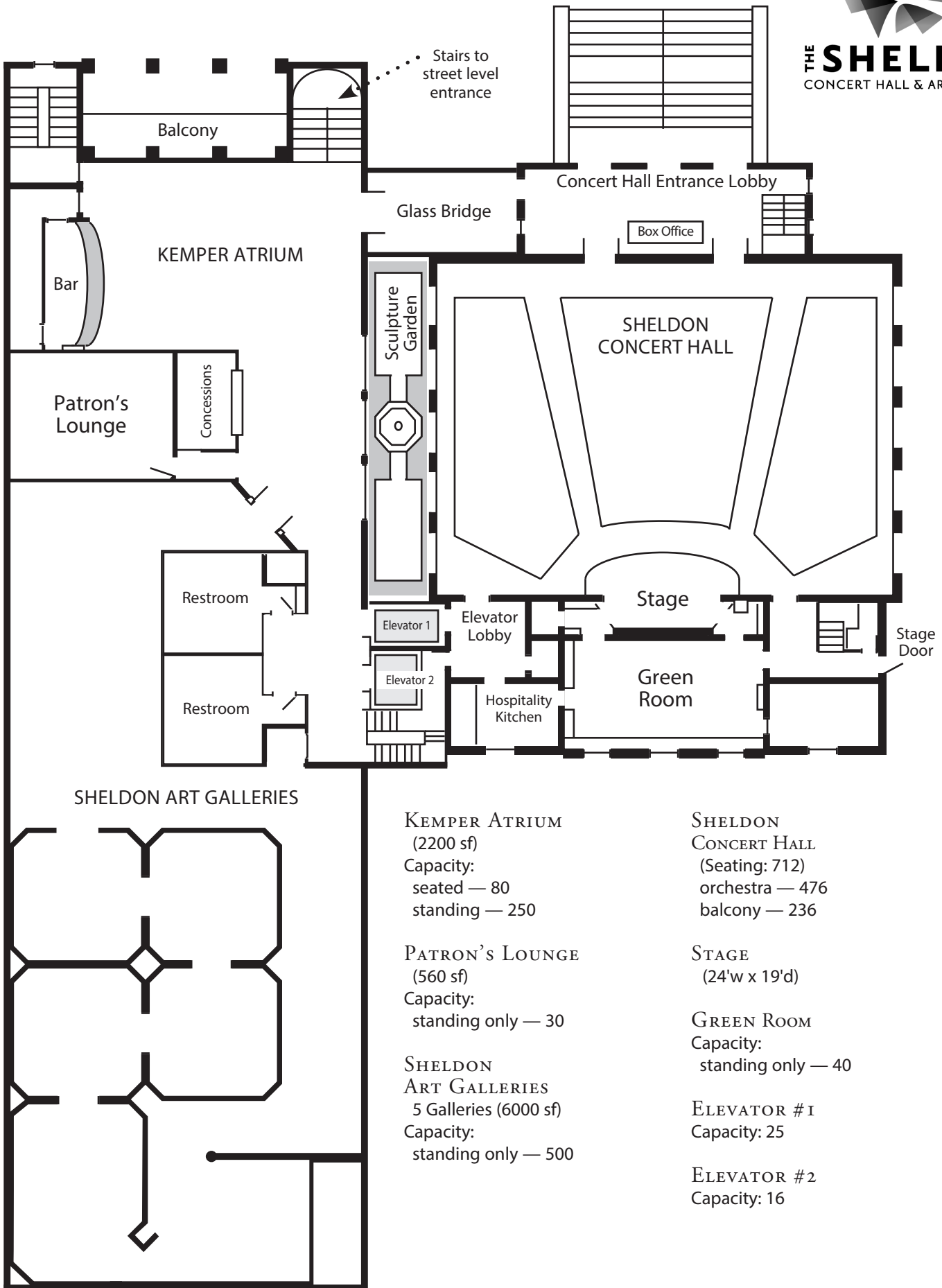
** Continuous bar service on multiple floors may require additional bar staff*

Please contact the events department for more information on signature drinks or special requests.

FULL FACILITY *Level 2*



THE SHELDON
CONCERT HALL & ART GALLERIES



KEMPER ATRIUM
(2200 sf)

Capacity:
seated — 80
standing — 250

PATRON'S LOUNGE
(560 sf)

Capacity:
standing only — 30

SHELDON ART GALLERIES
5 Galleries (6000 sf)

Capacity:
standing only — 500

SHELDON CONCERT HALL

(Seating: 712)
orchestra — 476
balcony — 236

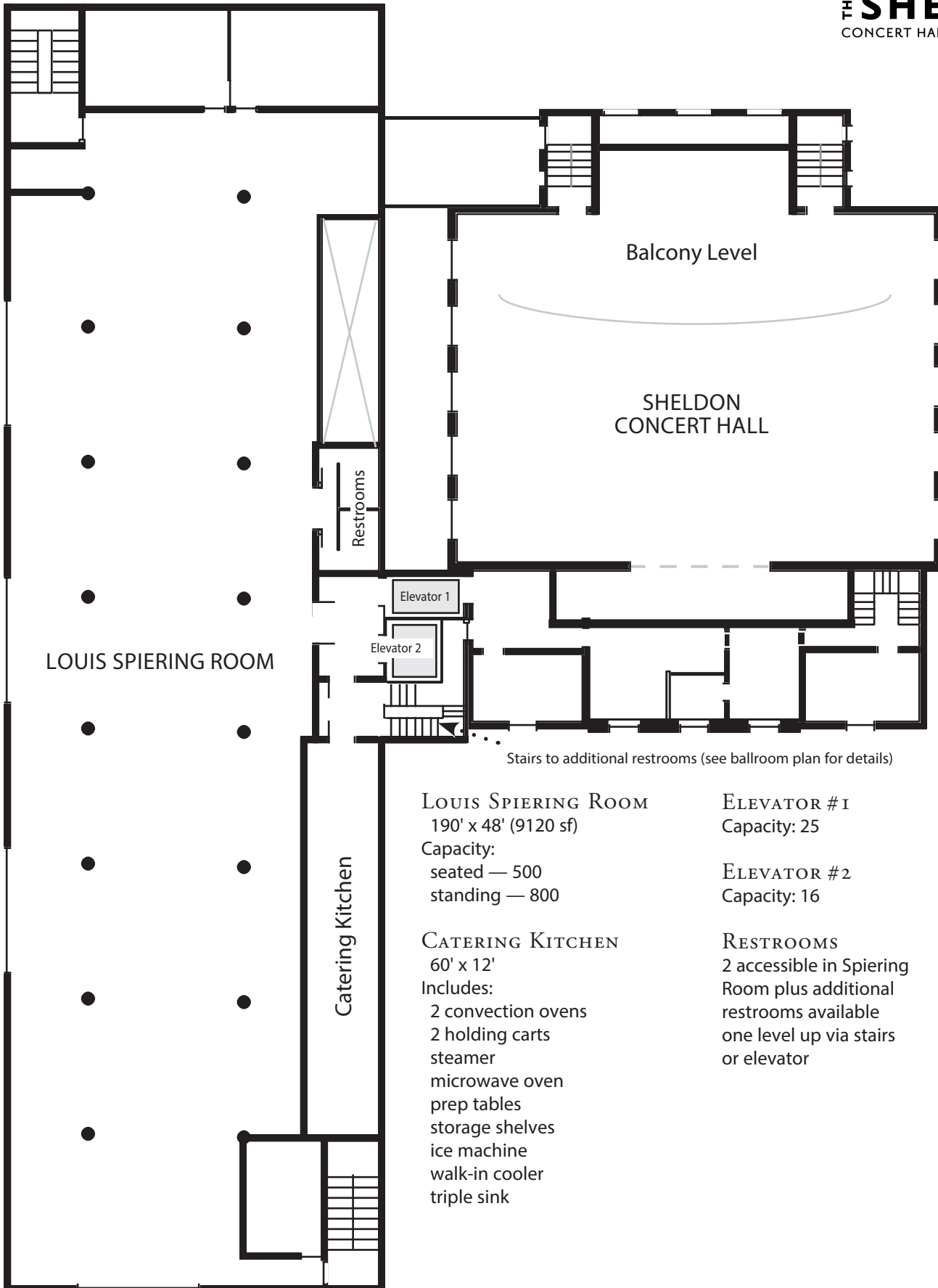
STAGE
(24'w x 19'd)

GREEN ROOM
Capacity:
standing only — 40

ELEVATOR #1
Capacity: 25

ELEVATOR #2
Capacity: 16

LOUIS SPIERING ROOM *Level 3*



LOUIS SPIERING ROOM

Catering Kitchen

Balcony Level

SHELDON
CONCERT HALL

Restrooms

Elevator 1

Elevator 2

Stairs to additional restrooms (see ballroom plan for details)

LOUIS SPIERING ROOM
190' x 48' (9120 sf)
Capacity:
seated — 500
standing — 800

CATERING KITCHEN
60' x 12'
Includes:
2 convection ovens
2 holding carts
steamer
microwave oven
prep tables
storage shelves
ice machine
walk-in cooler
triple sink

ELEVATOR #1
Capacity: 25

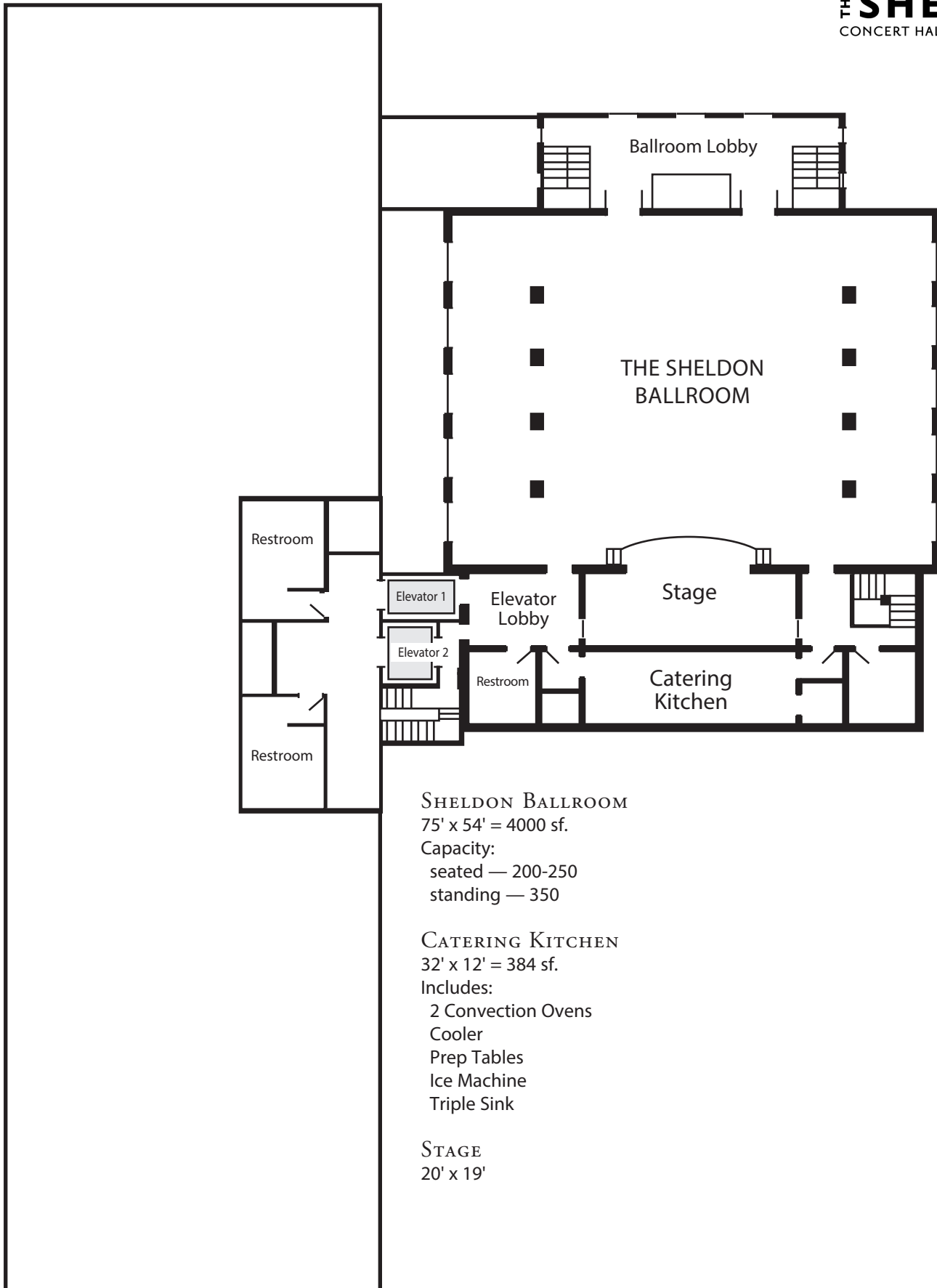
ELEVATOR #2
Capacity: 16

RESTROOMS
2 accessible in Spiering
Room plus additional
restrooms available
one level up via stairs
or elevator

THE SHELDON BALLROOM *Level 4*



THE SHELDON
CONCERT HALL & ART GALLERIES



SHELDON BALLROOM

75' x 54' = 4000 sf.

Capacity:

seated — 200-250

standing — 350

CATERING KITCHEN

32' x 12' = 384 sf.

Includes:

2 Convection Ovens

Cooler

Prep Tables

Ice Machine

Triple Sink

STAGE

20' x 19'